

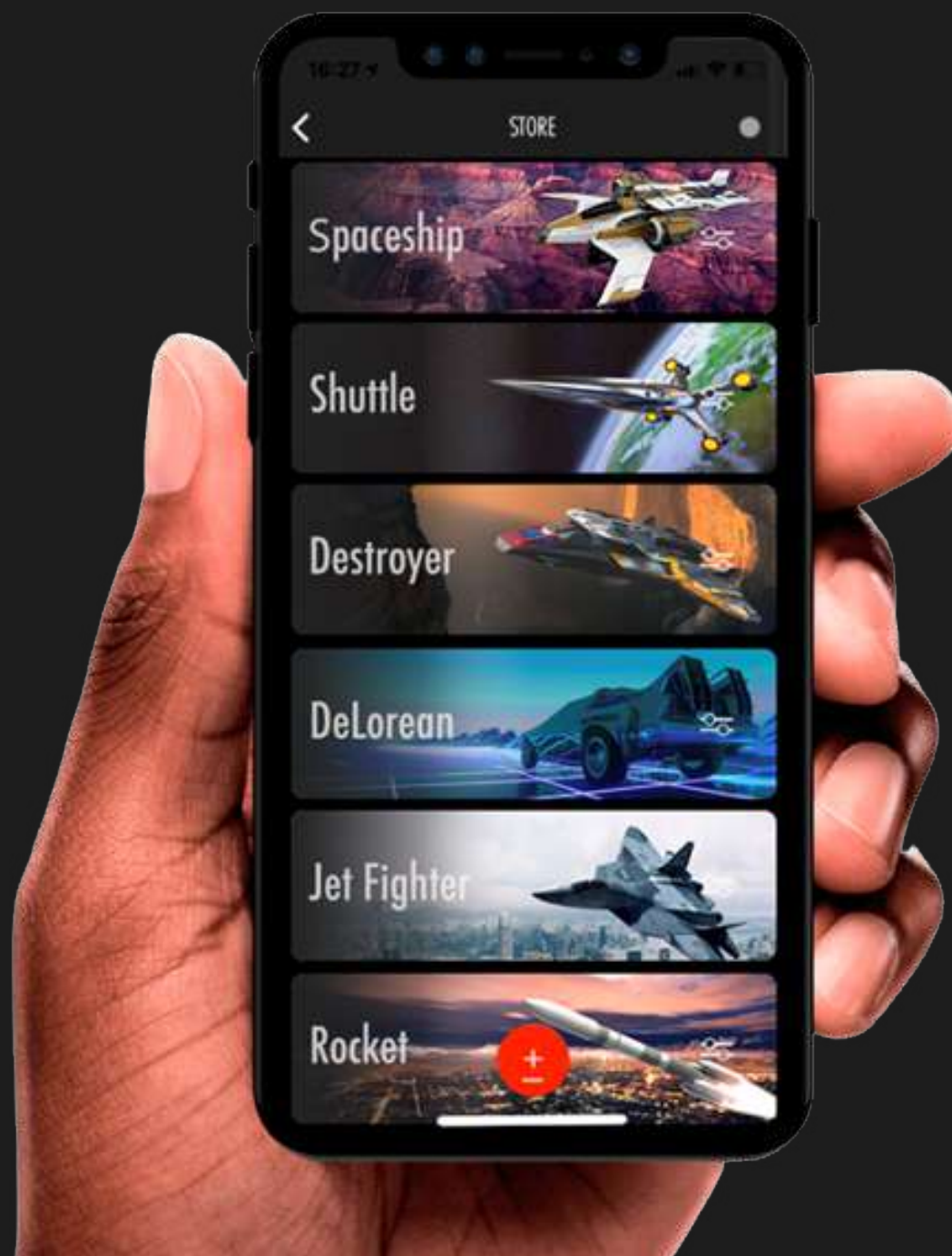
THOR

**THOR ELECTRONIC
EXHAUST SYSTEM**



INSTRUCTION

Drive Select function
in app THOR



DRIVE SELECT FUNCTION

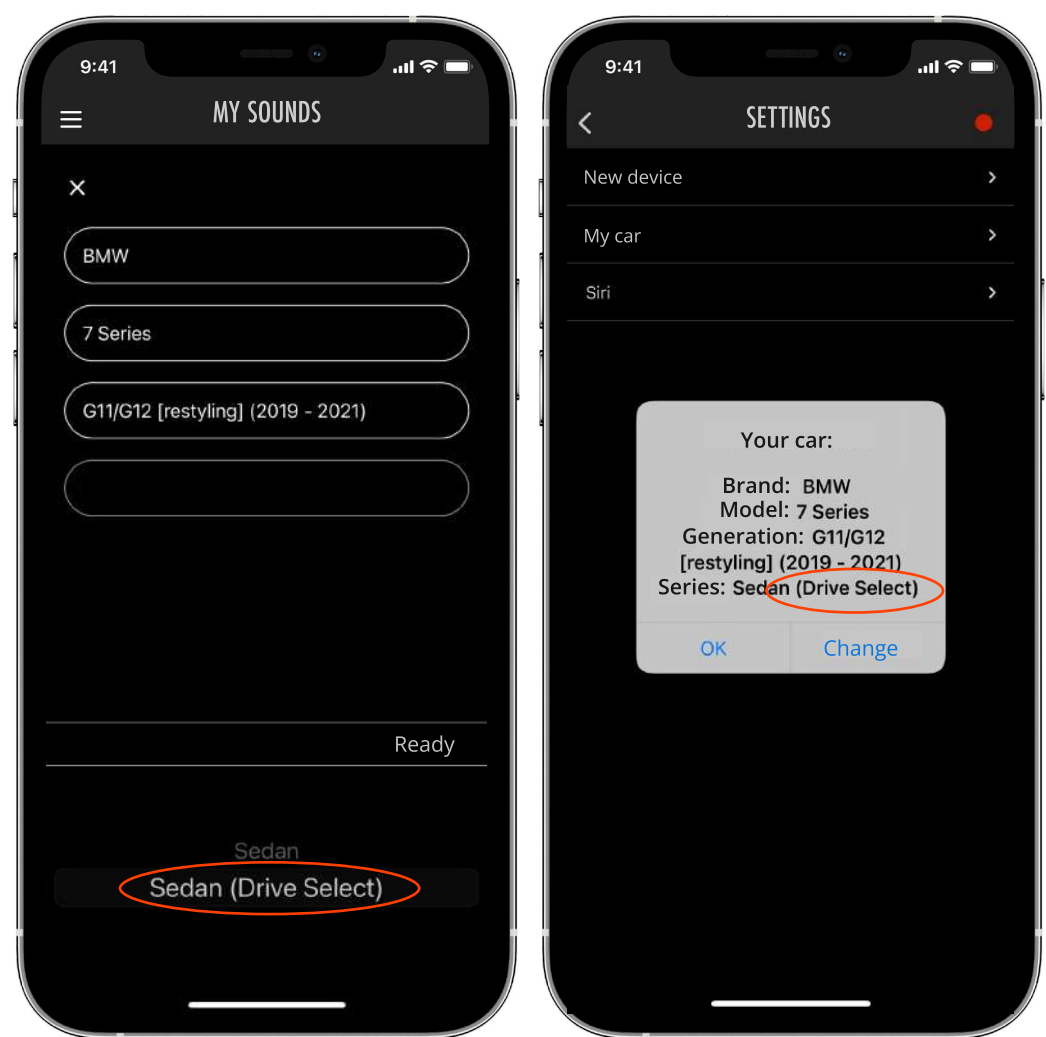
Synchronization of sound presets with engine operating modes (Drive modes)

When you change the car drive mode, Thor exhaust sound should be switched

STEP 1

Select the car profile marked with Drive Select phrase

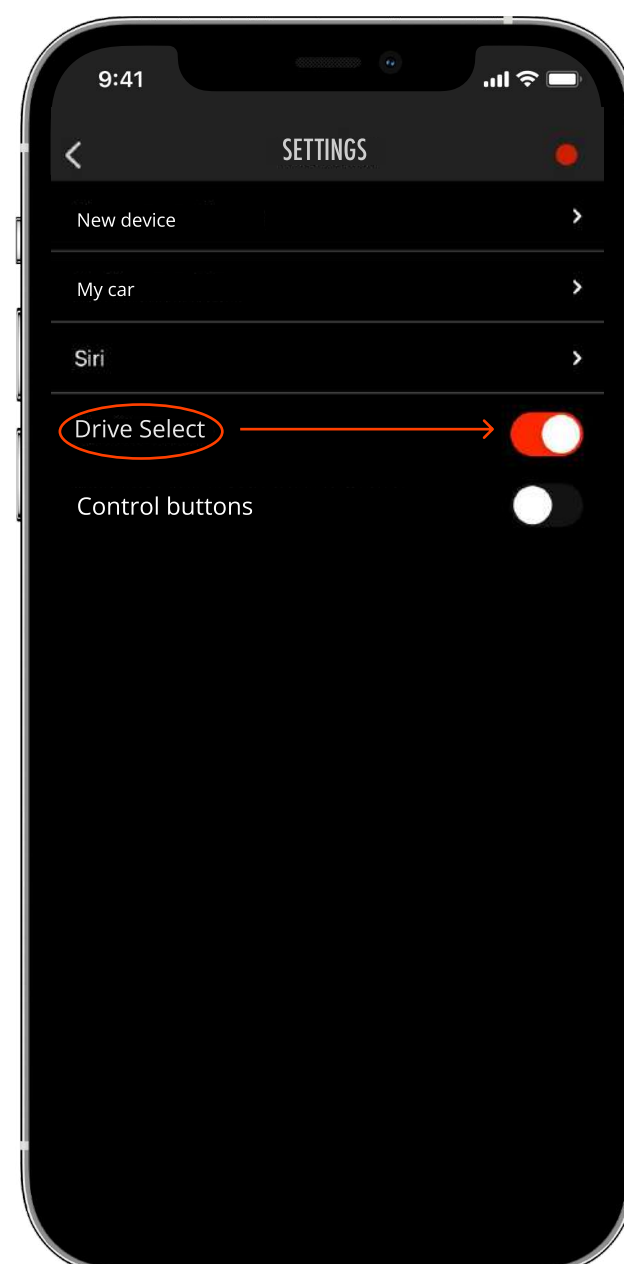
- There are car profiles without indication of Drive Select option in titles



STEP 2

Turn on the Drive Select switcher in application settings

- Switcher appears, if Drive Select option is available for your car

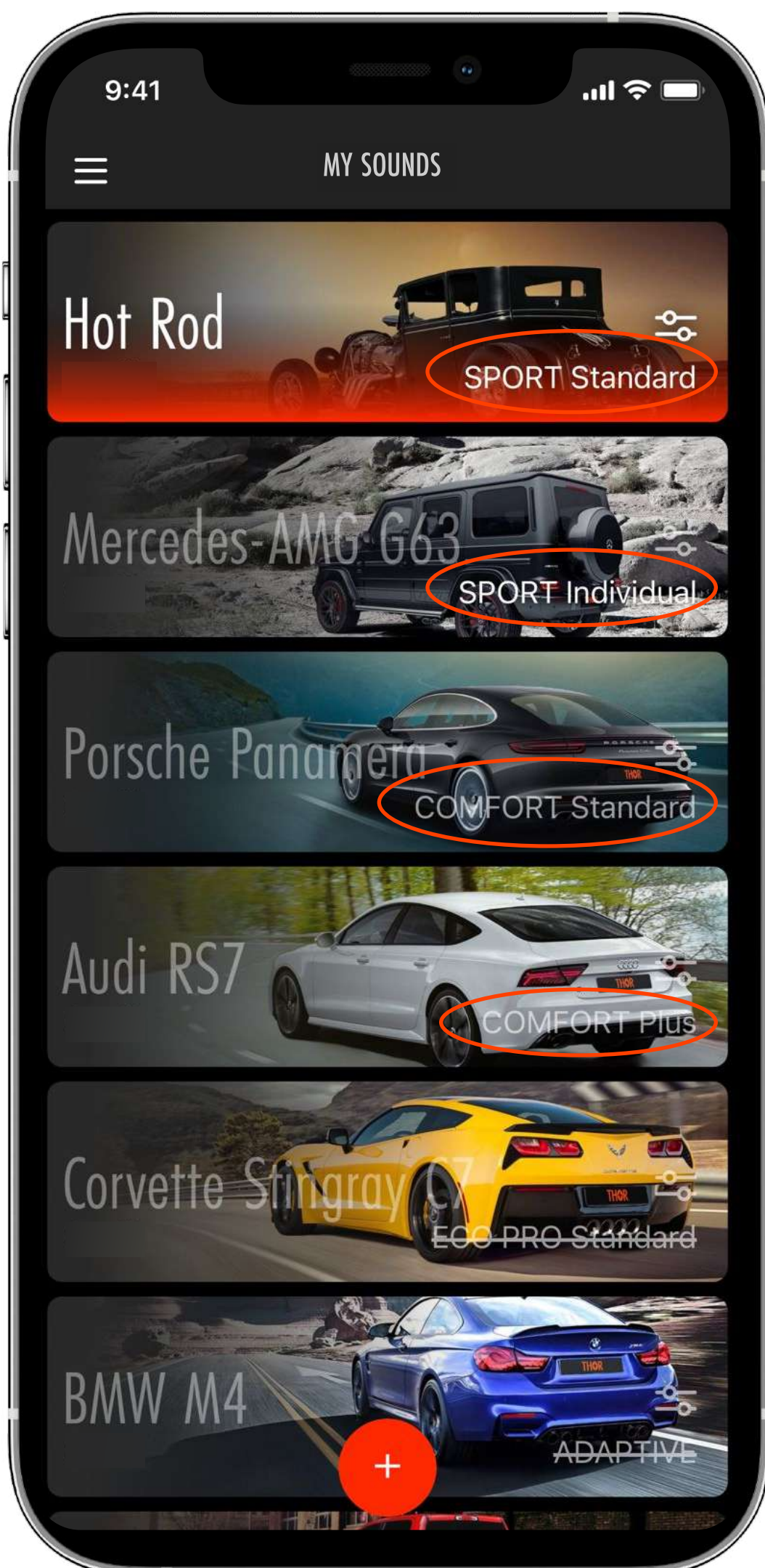


MODES

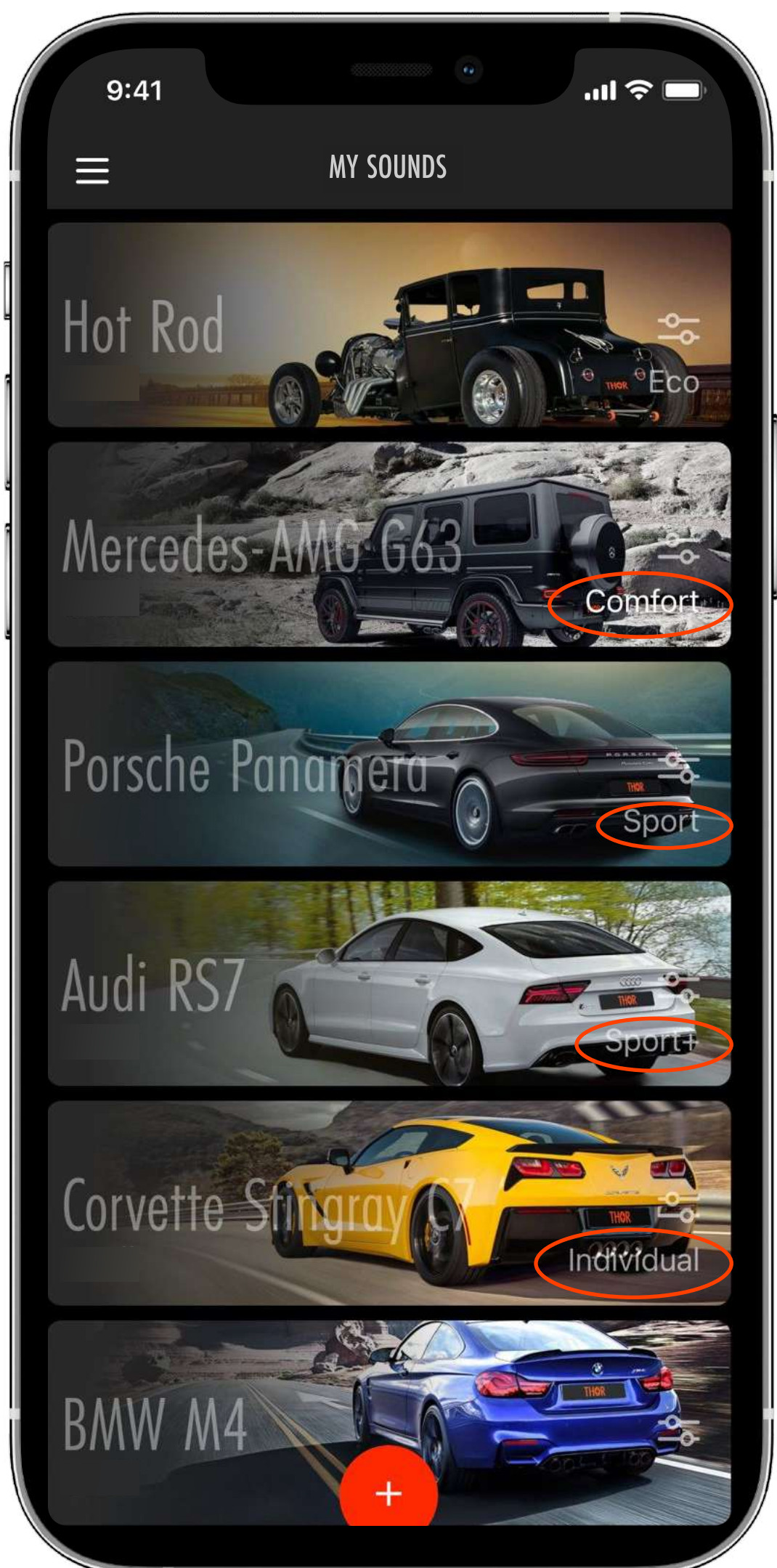
Drive Select modes titles will appear in the right corner of sound boxes

Several upper sound presets are reserved for Drive Select modes

● BMW 7



● AUDI A6



THE TITLE OF DRIVE SELELCT MODE HAS 3 STATUSES

STATUS 1

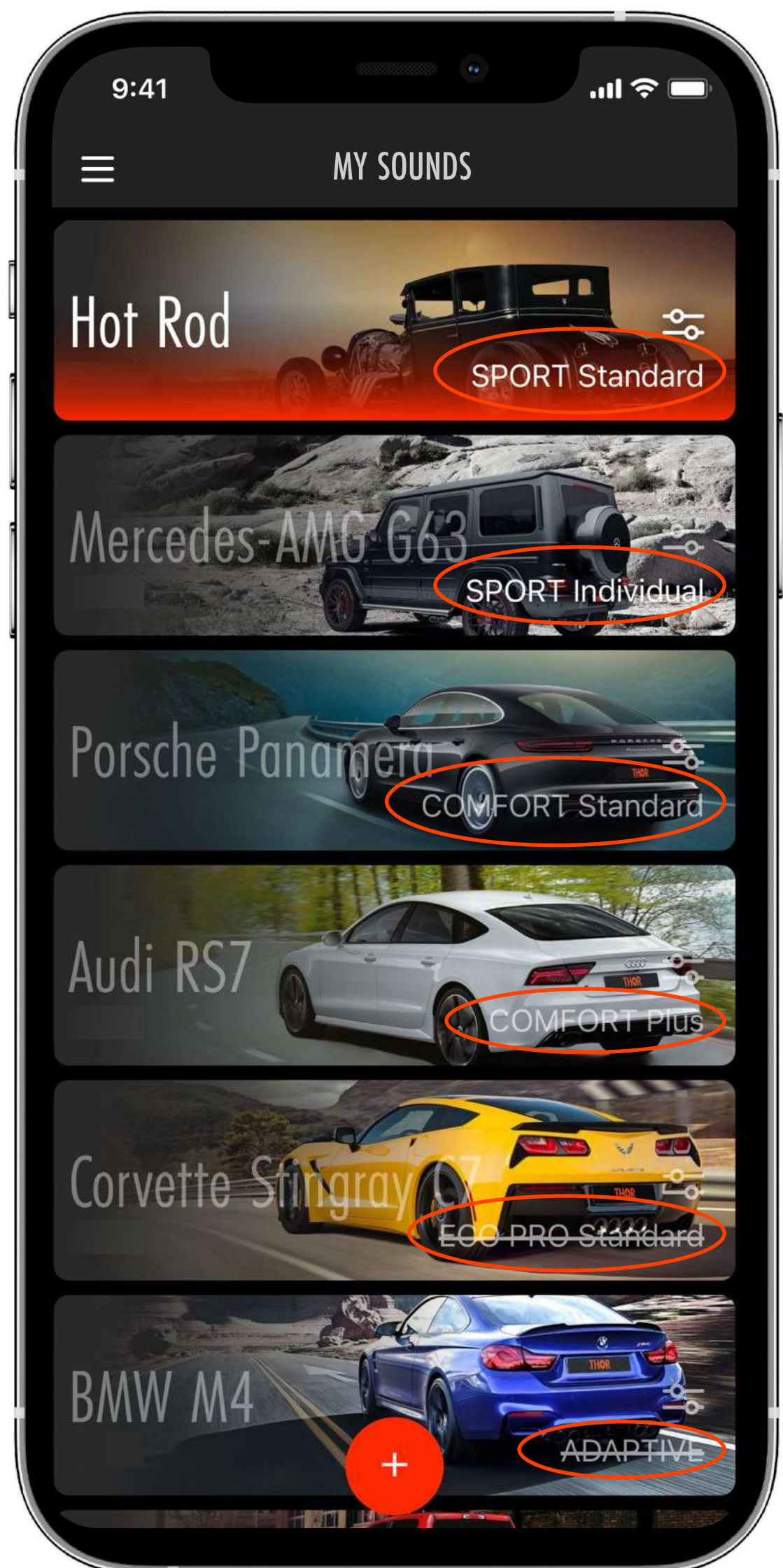
White - it is active. Exhaust sound changes when related car driving modes switches on

STATUS 2

Gray- it is non active. The sound does not change itself. Thor system ignores this car driving mode.

STATUS 3

Crossed out — The system stops playing the sound, turns it off



- Status can be changed by touching Drive Select title in the lower right corner